

PREVEA *360*  
health plan<sup>SM</sup>

Provides *Care and Coverage*



All  
Around  
You



# Your *best interest* is our top interest

Prevea360 Health Plan believes that health insurance should be simple, smart and support your business' needs. We help you take control of your business and get more value for your health care dollar by taking the guesswork out of your insurance plan. Our integrated model and guiding care principles are our top interests because they serve your business' best interest.



## Integrated Insurance Model

Prevea360 Health Plan is part of an integrated health care delivery system. This true collaboration between health care experts, hospital partners and insurance providers results in an exceptional experience for our members and patients.



## Preventive Care Focus

Preventive care is in our DNA. That's why we support and encourage your employees to get vital screenings and care. Plus, our network providers take it one step further by delivering timely, preventive care. After all, the best way to remain healthy is to prevent sickness in the first place.

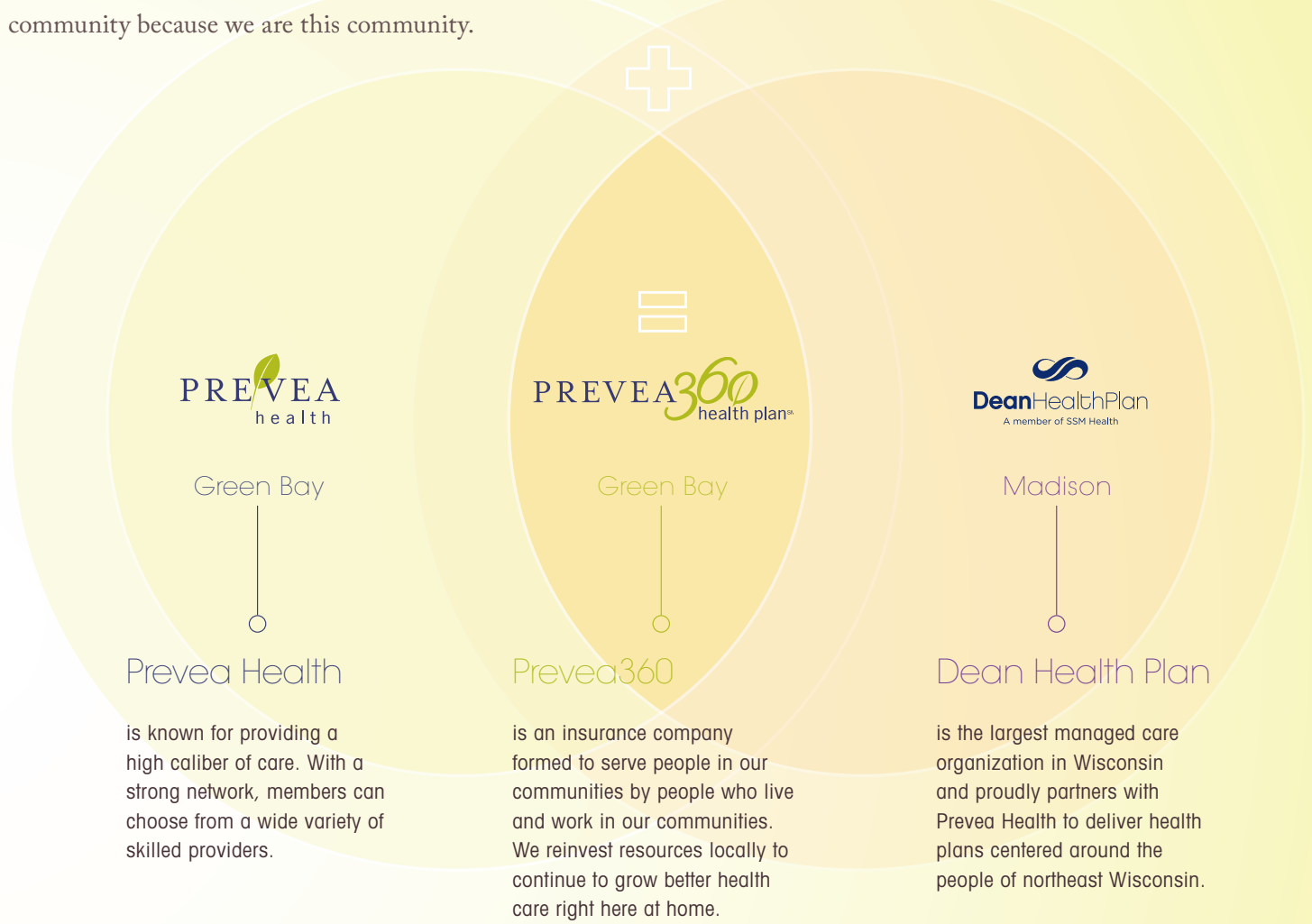


## Population Health Strategies

Our health intervention strategies are designed to engage your employees, manage their health and improve overall health care quality. The result? Better health outcomes at a lower cost for your team and more value for your business' health care dollar.

# Your *neighbors* just down the road

Just like you and your organization, our employees live and work in the communities we serve. We understand this community because we are this community.



## Convenient access right in your backyard.

Whether you call us, visit us online or in person, you'll be working with someone who knows what you need. You can rest assured that wherever you are in northeastern Wisconsin, our trusted doctors, hospitals and clinics are right in your neighborhood.

42  
PCP Clinics

6  
Hospitals

11  
Counties in Service Area

1  
Integrated Health Plan

# Straightforward approach to insurance

Take control of your business and get more value for your health care dollar.



## Flexible Plan Designs

From traditional HMO plans to self-funded options and everything in between, you'll be sure to find a plan to meet the needs of your business. We'll work with you and your budget to design the ideal plan.

## Valuable Programs

No matter your organization's health and wellness needs, Prevea Health's LeadWell® Corporate Health & Wellness program will work with you to develop a custom program, featuring workplace education, fitness programming and dedicated wellness centers.



## Complex Case Management

Our care management services—which include case, utilization and disease management—can help guide your employees to the most appropriate and cost-effective method of care for their medical needs. This not only helps to keep your employees healthy, but also contains costs, resulting in more affordable health coverage for you and your employees.



## Cost Containment Strategies

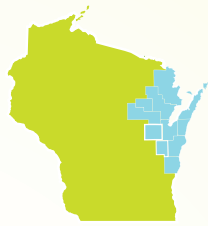
Because we are an integrated delivery network, we offer effective care management and population health programs that result in higher quality, lower costs and better health outcomes.

## Online Tools

You'll have anytime access to secure self-service portals to view and manage your organization's health plan benefits. *MyPrevea* allows you to add or remove employees and check enrollment status.

# Prevea360 *works hard* for your hard workers

Be a winner with your employees and give them the coverage they want, with the benefits they need.



## Convenient Access

With providers in 11 counties, 42 clinics and 6 hospitals in northeastern Wisconsin, we offer one of the largest networks in the region.



## Preventive Services

We do more than help pay the medical bill. At the heart of our preventive care philosophy is a promise that your team will get the support they need to remain healthy and prevent disease.



## Member Rewards

Living Healthy, powered by WebMD, is our comprehensive wellness program that includes reward incentives for your employees' healthy activities.

## Powerful Tools

Your employees get access to *MyPrevea* and Member Portal. These are online accounts designed to have a healthy impact on our member's wellness and their wallet.

## Exceptional Support

When your employees have insurance questions or needs, our knowledgeable specialists are just a call or a click away. Plus, members get access to Prevea Care After Hours, for care advice outside of business hours.

## Out-of-Area Care

Both urgent and emergency care are covered by Prevea360 Health Plan when members are traveling and unable to return to the service area for immediate treatment when they have concerns.

# Prevea360 provides plans that *fit your business*

Regardless of your company's size, the number of employees you have or where they're located, we have insurance options to fit you and your budget. Prevea360 Health Plan offers the flexibility to build an insurance plan that suits the needs of your business.

## Funding Options

Which type of funding option is best for your company?



Fully-Funded



Self-funded  
(100+ Subscribers)



Contact your Prevea360 agent today to customize your plan.

## Employee Residence

Where do your employees live?

Within **CORE SERVICE AREA**

**OUTSIDE** core service area

Outside of Wisconsin



## Plan Offerings

What options are most important to your organization?



Overall Plan Cost



Health Savings Accounts



Flexible Prescription Plans



Health Reimbursement Accounts



Employee Deductibles



Network Flexibility

**Now offering**

**SSMHealth**  
Plan Well HSA™

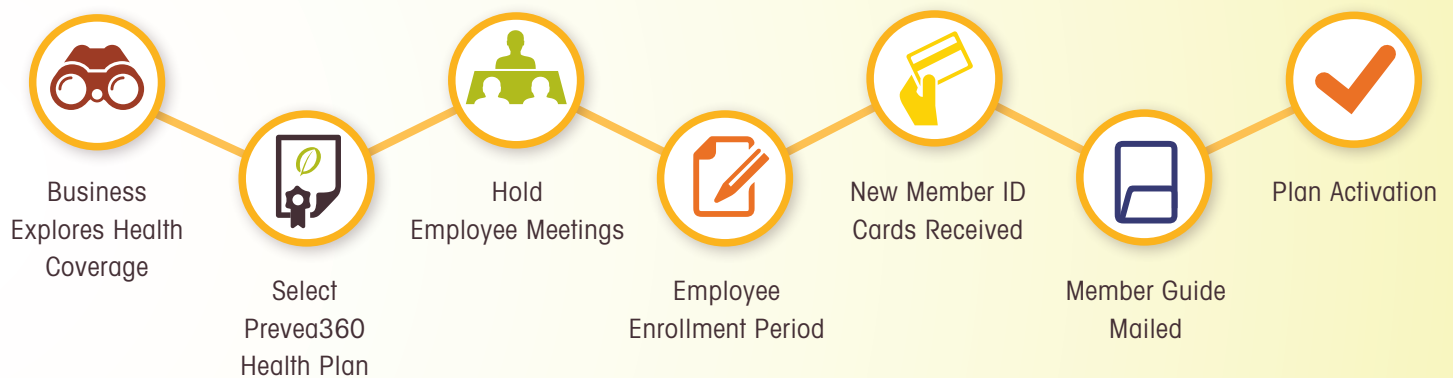
Some of our plans are compatible with a health savings account (HSA), providing even more flexibility on cost for your employees. SSM Health's Plan Well HSA™ administered by Optum Bank, Member FDIC, allows an employer or individual to set aside pretax dollars for qualified medical expenses. The funds can roll over from year to year and the accounts are also "portable" meaning that it stays with the employee should they ever change employers.

# The importance of first impressions

Switching care providers can be overwhelming for employees. That's why we created the Ambassador Program, exclusively for Prevea360 Health Plan members. We go to great lengths to ensure your initial interactions with Prevea360 go as smoothly as possible. For starters, we mail your employees a Member Guide at enrollment that introduces them to their new plan and health partner, Prevea360 Health Plan.

## Ambassador Program Services include:

- Working with your human resources staff to attend onsite employee benefit meetings
- Providing guidance in selecting a new physician within the Prevea360 coordinated network
- Connecting you with Prevea360 representatives to answer any health insurance coverage questions



Members can also visit [prevea360.com/newmember](https://prevea360.com/newmember) for helpful information.

As a new partner with Prevea360 Health Plan, our Sales and Client Services team will support you with your organization's specific onboarding needs. We are able to have conversations with employees who may have additional health concerns and craft a unique plan ensuring they receive the best care possible.

# PREVEA<sup>360</sup> health plan<sup>SM</sup>

Provides *Care and Coverage*



All  
Around  
You



Prevea360 Health Plan does not discriminate on the basis of disability in the provisions of programs, services or activities.

If you need this printed material interpreted or in an alternate format, or need assistance in using any of our services, please contact a Customer Care Specialist at 877.230.7555 or TTY: 711.

## PREVEA<sup>360</sup> health plan<sup>SM</sup>

PO Box 28467 • Green Bay, WI 54324-0467 • 877.230.7555 • TTY:711 • [prevea360.com](http://prevea360.com)